



ENGAGE Manipulation Scripts

Manipulation Scripts are Engage Components that allow data to be controlled and changed during a transfer process.

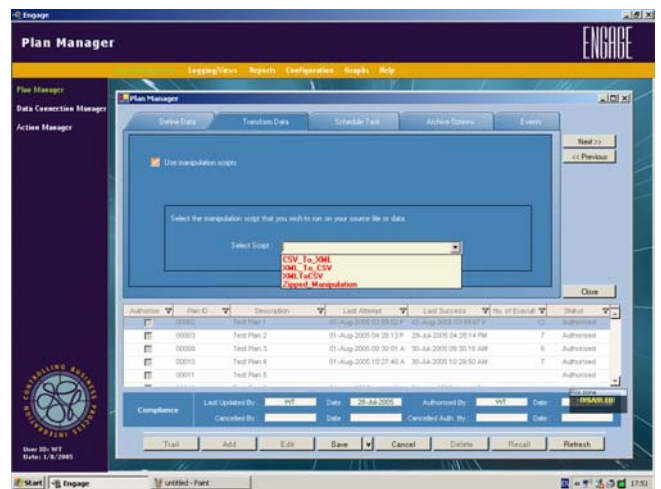
Because it is rare that data and information can simply be moved from one system to another, Engage has a powerful scripting function to enable data to be modified during the transfer. The extent of the manipulation depends on the requirements of the process, for example: Engage plans can be used to carry out complex data cleansing and data substitution plus merging with static data –all in parallel with the main transfer activity.

For maximum flexibility and future proofing, Engage is designed in a modular fashion and Manipulation Scripts can be built, customised, installed and uninstalled independently from the main system.

Manipulation Scripts can be written in any language that can be executed on the Engage Server host computer. This typically includes any and all executables regardless of development platform (VB, C++, C#, .net, Delphi etc) as well as Java, VBScript, JavaScript and batch files.

Scripts can be written manually, or Engage has a number of Script Wizards that will automatically write scripts based upon the information supplied via the wizards interface.

Engage ships with a suite of standard script wizards that allow out-of-the-box file conversion style manipulations between common file forms. Complex processing tasks must be manually created.

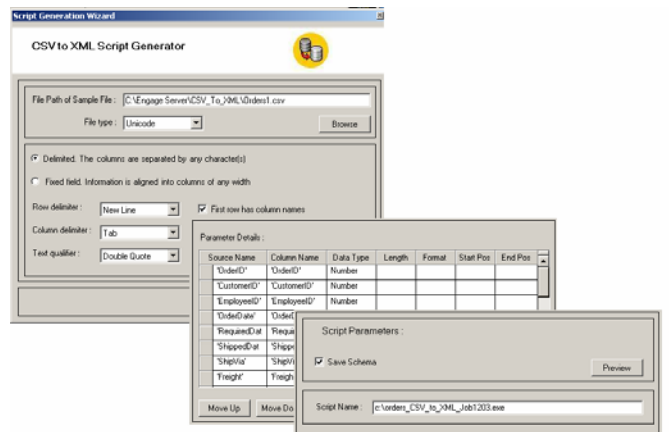


Loading Scripts

The Engage standard wizards are:

- **CSV to XML:** This allows the creation of scripts to execute conversions either way between character delimited files and XML files.
- **All to Zip:** This allows the creation of scripts to zip files during transfer.

Additional file formatting wizards are being developed and will be rolled out as they become available.



Script Wizard

Please contact DBFS for the other ENGAGE information sheets about Connectors, Advanced Features and MIS Modules.