



# ENGAGE Standard Connectors

Connectors are Engage Components that allow connectivity to external applications or data storage systems.

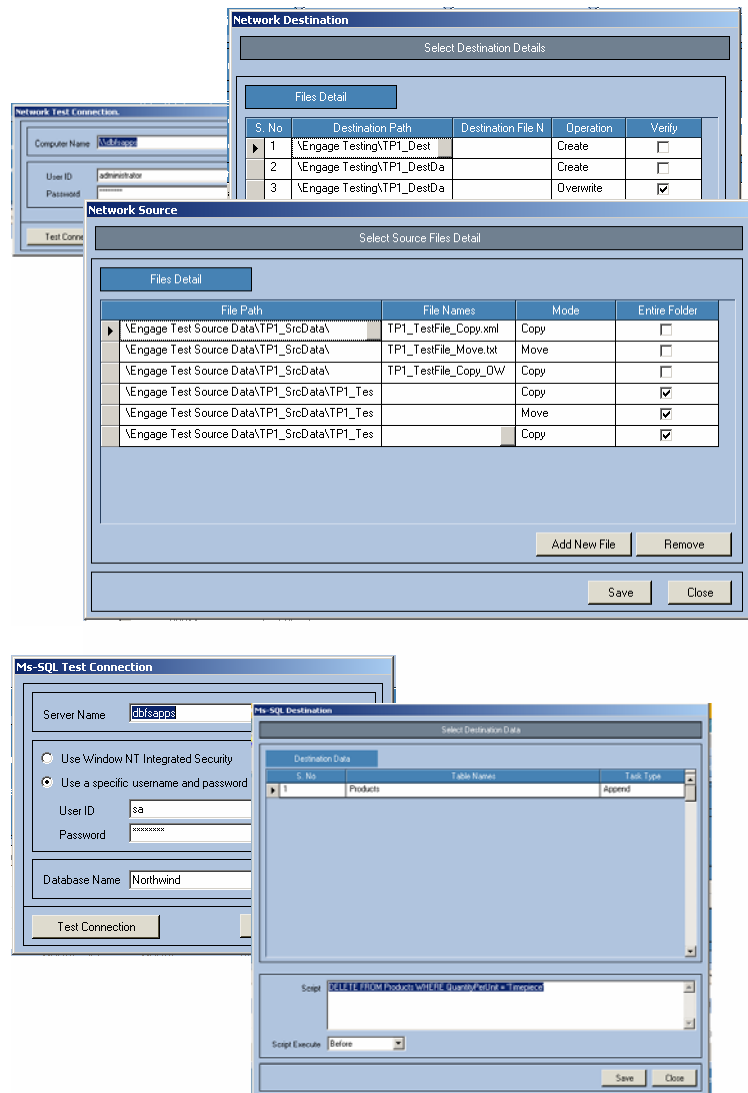
In order to interact with disparate systems, Engage deploys Connectors that can be setup to point to different data storage environments. A data storage environment is any electronic application or filing system that can be accessed from the Engage Server.

For maximum flexibility and future proofing, Engage is designed in a modular fashion and connectors can be built, customised, installed and uninstalled independently from the main system.

Engage ships with a suite of standard connectors that will allow out-of-the-box connectivity to a large number of data storage environments.

The Engage standard connectors are:

- Network:** The network connector allows ENGAGE plans to access files of any type and format from any local area network location. In many cases, even though the business process requires data to be fed from one system to another, the method often deployed to achieve this is to exchange files from shared locations.
- FTP:** The FTP connector allows ENGAGE to connect to FTP servers in order to retrieve or deliver data to non-LAN locations. When exchanging information with third party organisations or 'branch-office' locations FTP file transfers are a common method of exchange. ENGAGE supports Secure FTP technology.
- Database:** The ENGAGE database connector will allow out-of-the-box connectivity to Microsoft SQL Server®, Sybase and Oracle databases. As well as the ability to define a data-mining process, the connector has advanced features that allow pre and post transfer scripts to run to implement business rules in the database update process.



### Terminology:

- Every Engage installation will have a number of different Connectors installed.
- In each Engage deployment there will be a number of Data Connections defined. Each Data Connection uniquely defines a specific location for a data location (e.g. SQLServer, Network Drive)
- In each Plan, two Data Connections are identified, and additional information is defined to specifically identify the source data or destination location to be managed. When defined in a plan, these become the Data Source and Data Destination Connections. If the Connector supports it, Connector Scripts can be added, and these will be executed before the data is sourced and/or after it is delivered/transferred.

Please contact DBFS for the other ENGAGE information sheets about Manipulation Scripts, Advanced Features and MIS Modules.